

AREMO-4196

The Best Cost-Performance 19" 4U Height Intel® Desktop Mother Board Based Rack-mount Computer



AREMO-4196 and AREMO-4196-MX is 19" 4U Rack-mount chassis and designed for PICMG SBC/SMB and ATX form factor with stylish front panel design, up to 14-slot expansion for PICMG backplane. AREMO-4196 series can support PS/2 PSU, two USB interface on front panel and build with replaceable air filter. AREMO-4196 series is suitable in several vertical markets, like Factory and Server applications.

FEATURES

- Three 5.25" and one external 3.5" HDD drive bays for RAID 0, 1, 5 & CD-ROM
- Two USB ports on the front panel
- Dual 12cm ball-bearing cooling fans for better ventilation
- Two card retainer positions
- PS/2 or redundant power supply installable
- ATX M/B applicable (AREMO-4196-MX)
- Easily detached and washable air filter
- Equipped with fan control card to detect fan failure

ORDERING GUIDE

- **AREMO-4196**
19" 4U rack-mount chassis for PICMG version
- **AREMO-4196/B**
19" 4U black rack-mount chassis for PICMG version
- **AREMO-4196-MX**
19" 4U rack-mount chassis for M/B version
- **AREMO-4196-MX/B**
19" 4U black rack-mount chassis for M/B version

GENERAL

Construction	Heavy-duty steel with aluminum front panel
Drive Bay	Internal: 5.25" x3, 3.5" HDD x1
Card Retainer	Three locations for one card retainer
Air Filter	Two replaceable air filter
Cooling Fan	Two 12cm ball-bearing cooling fans
Indicator	Power on/off x1, HDD x1
Switch	Power on/off x1, System reset x1
Speaker	One 8Ω speaker
Connector	Two USB ports on the front panel
Standard Color	Silver, Black
Dimension	482(W) x 481(D) x 177(H) mm; 19"(W) x 18.1"(D) x 7"(H)
Weight	Net: 13.5 kg (29.8 lb); Gross: 14.5 kg (32 lb)
Backplane	PBPE-13A8: 14-slot [PCIe (4), PCI (8), PCI-X (0)] active PICMG1.3 backplane PBPE-13A4: 14-slot [PCIe (8), PCI (4), PCI-X (0)] active PICMG1.3 backplane PBPE-12A9: 14-slot [PCIe (2), PCI (9), PCI-X (0)] active PICMG1.3 backplane PBPE-12P4: 14-slot [PCIe (8), PCI (4), PCI-X (0)] PICMG 1.3 backplane PBPE-11A3: 14-slot [PCIe (8), PCI (3), PCI-X (0)] active PICMG1.3 backplane

POWER SUPPLY

PLUTO-D3501PJ optional

Maximum output	350W active PFC
Output Voltage & Current	+5V@12A; +12V1@18A; +12V2@18A; +3.3V@18A; -12V@0.3A, +5Vsb@2.5A
Input Voltage	90V ~ 264V AC, full range
Input Frequency	50 ~ 60Hz
Input Current	8A@115V, 8A@230V
Efficiency	> 80%
MTBF	100,000 hrs
EMI & Safety Approval	UL, TUV, CE, FCC, CB, VCCI, 80PLUS
Temperature/Humidity	Operating: 5 ~ 50°C, 20 ~ 85%RH Storage: -40 ~ 70°C, 10 ~ 95%RH
Dimension (WxDxH)	150 x 140 x 86 mm; 5.9" x 5.5" x 3.4"

ENVIRONMENT

Operating Temperature Range	0 to +55°C
Storage Temperature Range	-20 to +80°C
Relative Humidity	5% to 95%, non-condensing
Vibration	5~7 Hz: 0.5" double amplitude displacement 7~2000 Hz: 1.5g acceleration



AREMO-4196

The Best Cost-Performance 19" 4U
Height Intel® Desktop Mother Board
Based Rack-mount Computer

FEATURE	BENEFITS
■ A lockable front door with thumb lock	■ Good for dust-proof & security
■ One power on/off switch and one system reset button on the front panel behind the lockable door	■ Avoid accidental reset for better running security
■ Fan control board	■ Detect fan fail and Alarm
■ Front replaceable air filter	■ For easy cleaning and install
■ Equipped two USB ports	■ Efficient Access
■ Dual 12cm ball-bearing cooling fans	■ Better ventilation to provide the system with higher reliability
■ Enhanced drive bracket to hold three 5.25" and one 3.5" HDD drives (internal)	■ For integrating varied systems with higher flexibility ■ Suitable for installing RAID and CD-ROM drive
■ Shock-resistant cushion for the drive bracket	■ Suitable for harsh industrial environment
■ Two adjustable positions for hold-down card retainers	■ For fixing all the cards more flexibly and tightly
■ Changeable modularized back panel for 14-slot ISA/PICMG backplane or ATX motherboard	■ Only one minute to change the back panel ■ Easy to change to different backplanes and keep stock
■ Field replaceable power supply bracket for both normal PS/2 power supply and PS/2 type redundant power supply	■ Only three minutes to change the defective power supply ■ Only thirty seconds to change the defective PSU module

REFINEMENT



PCI based RAID kits, supporting up to three SATA HDDs with RAID 0, 1, 5 selections. The Disk bus is E-IDE with Ultra DMA support. The RAID kits provide a GUI manager for installation and maintenance. Hot-swap and hot-spare capabilities are also supported.



Friendly design of handles, you can lift and unmount AREMO-4196 comfortably and easily.



Power switch, RESET switch, HDD / Power / Fan-fail / LAN LEDs and two USB 2.0 ports are on the front panel.



Flexible design to install power supply, the bracket can be adapted to PS/2 type or mini-redundant power supply.



AREMO-4196 enhances the drive bracket to integrate up to three 5.25" and one 3.5" disk drives within a limited space.



Equipped with dual 12cm ball bearing fans, AREMO-4196 provides the best ventilation up to 208CFM to expire heat from the system.



AREMO-4196 adopts the newly designed card retainer to hold both the PCI and ISA type add-on-cards more tightly.



AREMO-4196 is equipped with two USB 2.0 connectors on the front panel to have a better security control.



The washable fan filter can be easily taken off to make an easier maintenance.



LED indicators include power, HDD, Fan-fail and LAN functions.



The thumb lock offers easy operation. Users can choose to lock it or not.



The washable fan filter can be easily taken off for easier maintenance.

AREMO-4196

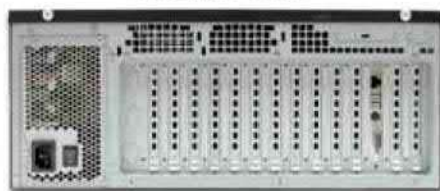
The Best Cost-Performance 19" 4U
Height Intel® Desktop Mother Board
Based Rack-mount Computer



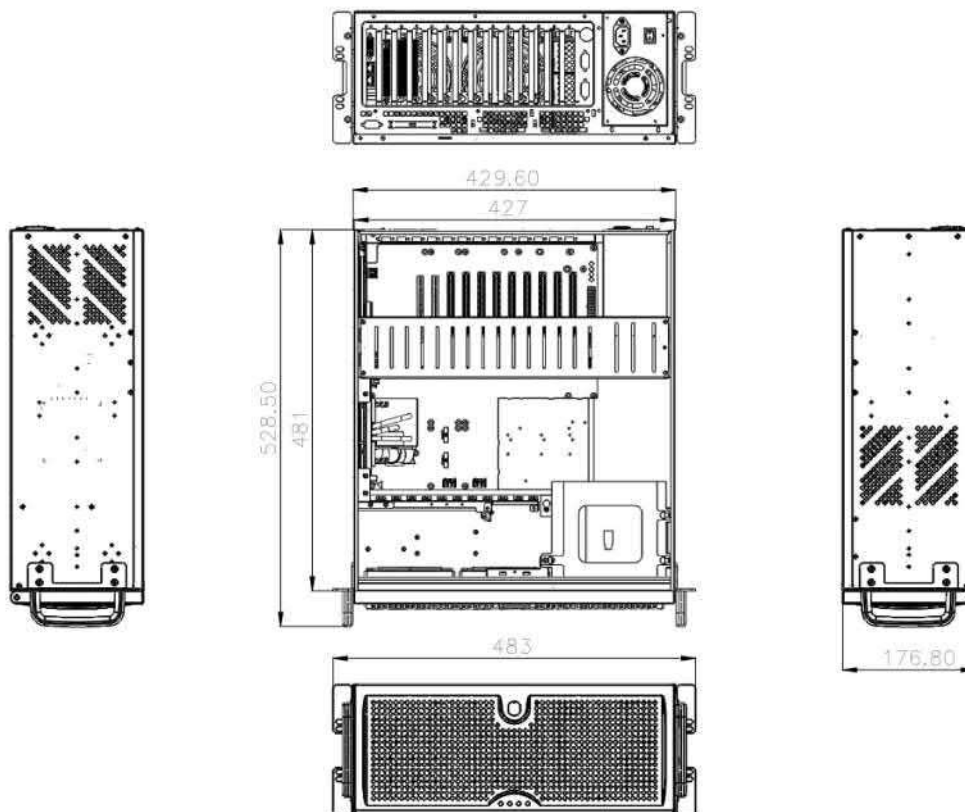
AREMO-4196



AREMO-4196-MX



MECHANICAL DRAWING



Unit: mm